

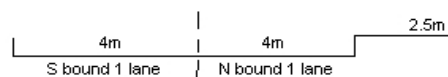
YEAR 2018

COVERAGE (B) STATION 4207

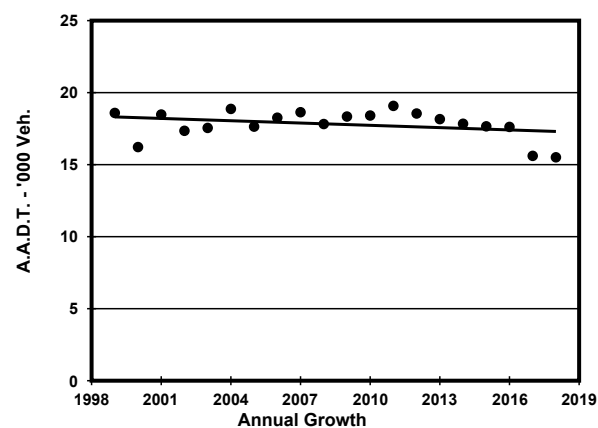
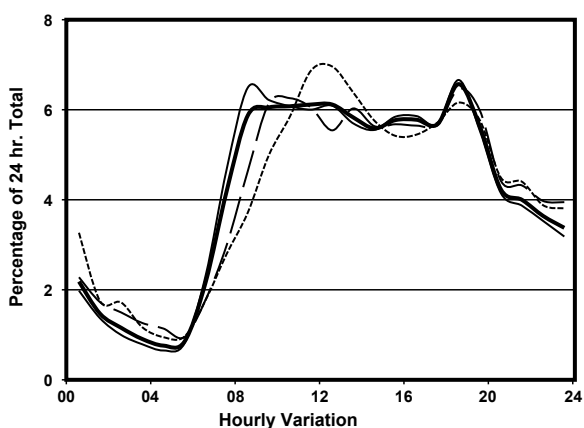
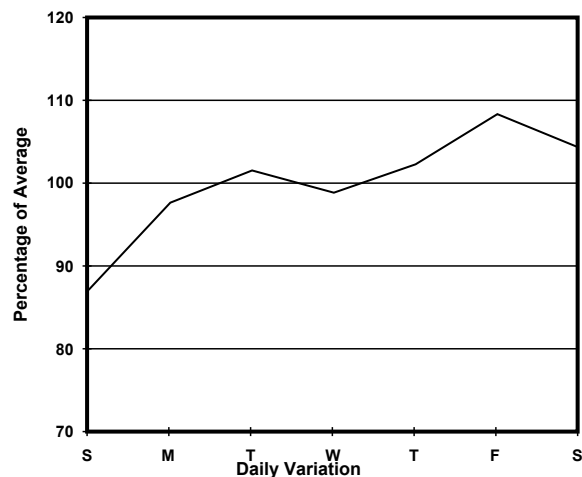
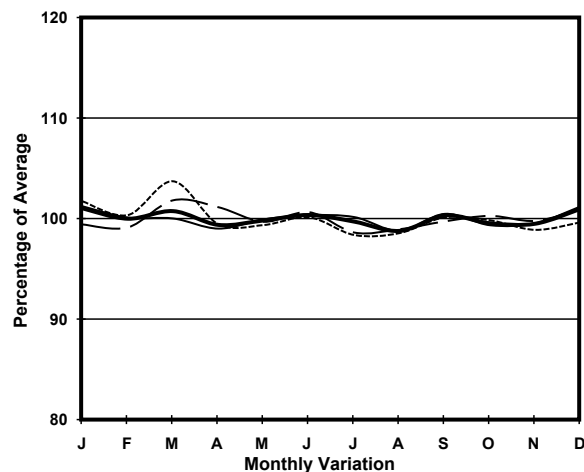
ROAD NETWORK MAJOR

ROAD TYPE DISTRICT DISTRIBUTOR

LINK CHEONG WAN RD & GILLIES AVE S (from RAILWAY TERMINUS to WUHU ST)



1. TRAFFIC FLOW VARIATION AND GROWTH



— All day — Mon.- Fri. Sat. - - - - Sun.

2. TRAFFIC CHARACTERISTICS (BY DIRECTION)

Parameter	All - Day	Mon. - Fri.	Sat.	Sun.
SOUTH BOUND				
A.A.D.T.	7160	7420	7670	5660
R 12 / 24 - %	70.8	72.2	68.3	64.6
R 16 / 24 - %	88.8	89.8	87	84.6
AM Peak Hour	0900-1000	0800-0900	0900-1000	0900-1000
One-way flow at AM peak hour	420	490	400	240
T - % (AM)	-	15.3	-	-
PM Peak Hour	1800-1900	1800-1900	1800-1900	1800-1900
One-way flow at PM peak hour	490	510	500	390
T - % (PM)	-	10.1	-	-
Prop.of commercial vehicles - 16 hr.	-	10.7	-	-
NORTH BOUND				
A.A.D.T.	8350	8470	8620	7950
R 12 / 24 - %	68.7	69.7	65.3	67.1
R 16 / 24 - %	85.7	86.2	84	84.6
AM Peak Hour	0900-1000	0800-0900	0900-1000	0900-1000
One-way flow at AM peak hour	520	540	600	440
T - % (AM)	-	14.2	-	-
PM Peak Hour	1800-1900	1800-1900	1800-1900	1800-1900
One-way flow at PM peak hour	530	550	550	450
T - % (PM)	-	6.8	-	-
Prop.of commercial vehicles - 16 hr.	-	5.7	-	-

3. OTHER INFORMATION AND COMMENT

4. Vehicle classification and occupancy - Monday to Friday

Time		Class of vehicle									
		Motor Cycle	Private Car	Taxi	Private LB	PLB	Goods veh.		Non Fr. Bus	Fr. Bus	
							Light	M & H		SD	DD
0700-0800	Pro	0.0	14.1	48.0	4.5	12.2	10.9	0.0	5.1	0.3	5.0
	Ocp	0.0	1.5	3.1	10.9	16.1	1.5	0.0	22.8	5.0	22.3
0800-0900	Pro	0.8	26.5	39.8	1.5	9.1	7.6	2.3	8.3	0.2	3.9
	Ocp	1.0	1.2	1.9	4.8	16.3	1.5	1.2	14.3	9.5	32.0
0900-1000	Pro	1.3	27.5	35.4	1.7	12.1	10.0	2.1	6.3	0.2	3.5
	Ocp	1.3	1.5	2.2	3.5	15.8	1.6	1.4	5.1	12.5	21.4
1000-1100	Pro	1.9	17.7	47.6	0.8	10.4	15.4	1.5	1.2	0.2	3.4
	Ocp	1.0	1.5	2.3	3.0	13.0	1.4	1.8	4.3	7.0	18.4
1100-1200	Pro	1.4	24.8	35.4	2.3	13.8	15.2	2.8	0.9	0.0	3.4
	Ocp	1.0	1.6	1.8	1.8	12.1	1.4	2.0	6.5	0.0	17.2
1200-1300	Pro	1.7	27.3	42.0	0.9	10.8	11.7	0.9	1.3	0.0	3.4
	Ocp	1.3	1.4	1.7	4.5	13.0	1.7	2.5	10.7	0.0	18.1
1300-1400	Pro	1.6	22.8	48.2	1.1	10.1	10.1	1.6	0.5	0.0	4.1
	Ocp	1.0	1.4	1.9	2.5	12.0	1.3	1.7	1.0	0.0	19.5
1400-1500	Pro	0.9	27.3	36.3	0.5	10.8	18.4	0.9	0.9	0.0	3.9
	Ocp	1.0	1.5	1.9	3.0	10.8	1.5	1.5	11.5	0.0	17.2
1500-1600	Pro	2.7	28.3	39.7	0.5	9.1	12.3	1.4	2.3	0.3	3.4
	Ocp	1.2	1.5	2.2	2.0	14.8	1.5	1.3	2.8	5.0	15.6
1600-1700	Pro	2.8	33.0	33.0	0.5	11.8	12.3	1.4	0.9	0.1	4.1
	Ocp	1.0	1.5	1.9	3.0	13.2	1.2	1.0	19.5	6.0	19.0
1700-1800	Pro	3.0	31.9	35.4	1.3	11.1	10.2	0.9	2.6	0.3	3.4
	Ocp	1.1	1.3	2.2	4.3	13.9	1.5	1.5	1.0	7.0	23.9
1800-1900 Peak hour	Pro	2.0	32.0	38.9	0.0	9.7	8.9	1.6	2.8	0.1	3.9
	Ocp	1.4	1.3	2.2	0.0	14.8	1.4	1.3	2.6	35.0	34.3
1900-2000	Pro	1.8	34.1	43.1	0.0	10.4	2.7	0.0	3.6	0.2	4.0
	Ocp	1.3	1.4	1.9	0.0	14.9	1.3	0.0	6.1	12.5	18.8
2000-2100	Pro	1.3	31.5	41.6	0.7	12.8	2.0	0.0	4.7	0.3	5.0
	Ocp	1.0	1.4	2.0	1.0	12.1	1.7	0.0	1.4	2.0	13.9
2100-2200	Pro	2.7	35.8	35.8	0.0	12.8	6.1	0.0	1.4	0.3	5.1
	Ocp	1.8	1.6	1.9	0.0	10.8	1.4	0.0	1.0	8.0	10.5
2200-2300	Pro	4.3	40.4	32.6	0.0	14.2	2.1	0.7	0.0	0.4	5.3
	Ocp	1.2	1.6	1.9	0.0	12.4	1.7	1.0	0.0	5.0	10.6
16 hours	Pro	1.9	28.1	39.6	1.0	11.1	10.1	1.2	2.8	0.2	3.9
	Ocp	1.2	1.4	2.1	4.8	13.5	1.4	1.5	8.5	8.3	20.0

Legend

Pro. Proportion of vehicles in % (Sum may not add up to 100% due to figure rounding)*

Ocp. Average occupancy of vehicles including both driver and passengers*

M&H Medium and Heavy

***** All traffic data are collected from combined bounds except for one way traffic